

Aged Care Accommodation and Fees



Stafford Lakes Aged Care Residence

TriCare Stafford Lakes offers a range of superior accommodation options for singles and couples to suit all budgets and requirements. The state-of-the-art extension will not disappoint those looking for residential aged care with a luxurious twist, secure courtyard areas, shaded outdoor seating and lush gardens.

All TriCare Aged Care Residences have Registered Nurses and qualified Carers onsite 24 hours a day. A team of dedicated professionals are always on hand to provide support and help our residents maintain the highest level of wellness and independence.

FEATURES

- Various type of accommodation for singles and couples.
- Co-located with Stafford Lakes Retirement Community for couples with different needs
- Pet visitor friendly rooms

AVAILABLE SERVICES AND SUPPORT

- Permanent Aged Care
- Secure Dementia Care
- Short Term – Respite Care
- Palliative Care

TriCare Stafford Lakes offers several different room types with payment options to fit your budget:

- **Refundable Accommodation Deposit (RAD):** a one-off, government-guaranteed, fully refundable lumpsum accommodation deposit which may also deliver pension benefits
- **Daily Accommodation Payment (DAP):** a non-refundable daily accommodation payment
- **Combination (Combo):** an apportioned combination of the RAD and DAP payment options

Please note: daily fees are charged in addition to the above payment options.

PREMIUM ROOMS

Studio Apartment with Private Ensuite: 32.7m²

- ✓ King-single bed with electronic ceiling hoist
- ✓ Kitchenette with stone benchtops and pantry
- ✓ Large wall-mounted smart TV
- ✓ Available with views of park and gardens
- ✓ 24-hour emergency call system

PAYMENT OPTIONS

RAD FROM \$500,000 - \$950,000

Refundable Accommodation Deposit: \$500,000

OR PAY

Daily Accommodation Payment: \$114.79

OR PAY A COMBINATION

50% RAD and 50% DAP: \$250,000 + \$57.40 per day

Stafford Lakes

AGED CARE RESIDENCE

682 Rode Road
Chermside West QLD 4032

P (07) 3350 7000
F (07) 3359 2155

E staffordlakesacr@tricare.com.au
W tricare.com.au

SUPERIOR ROOMS

1 Bedroom Apartment w/ Lounge & Ensuite

Single Room w/ Ensuite - Secure Dementia Area

Single Room with Ensuite

- ☒ Automated king-single bed
- ☒ Individual climate-controlled air conditioning
- ☒ Smart TV and storage for personal belongings
- ☒ Secure dementia rooms available
- ☒ 24-hour emergency call system

PAYMENT OPTIONS

RAD \$550,000

RAD \$450,000

RAD FROM \$450,000 - \$550,000

Refundable Accommodation Deposit: \$450,000

OR PAY

Daily Accommodation Payment: \$103.31

OR PAY A COMBINATION

50% RAD and 50% DAP: \$225,000 + \$51.66 per day

PREMIUM ACCOMMODATION

Our Premium Studio apartments boast 32m² of contemporary style and décor. The studios are light and airy, displaying floor to ceiling windows, many with beautiful garden views. They include a kitchenette with pantry, mini-fridge, stone benchtop, beautiful private ensuite with a walk-in shower.

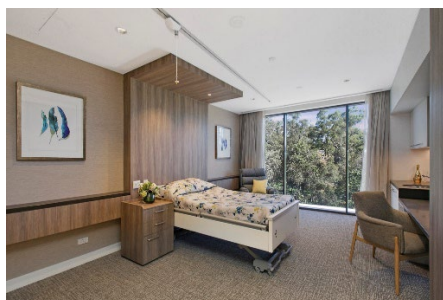
Enjoy quality furnishings, including your own architecturally designed bedhead, king single bed, electronic ceilings hoist, premium care system, ample storage, free wi-fi, a desk, large wall-mounted smart TV, telephone connection and an electric recliner.

SUPERIOR ACCOMMODATION

Superior single suites are spacious, comfortable, and traditional in style. These accommodations feature individually controlled heating and cooling, a well-appointed private ensuite, automated king single bed, smart TV, electric recliner, mini-fridge, storage, and space for personal belongings.

The one-bedroom apartments have a separate lounge with a kitchenette, walk-in robe, and a king single bed.

Our accommodations in the secure area provide additional security for at-risk residents with special needs or dementia, where residents to enjoy freedom and safety while still moving around freely without restriction.



EXTRA AND ADDITIONAL SERVICES

TriCare Stafford Lakes offers hotel-style services and can include additional food and beverage choices, beauty and wellbeing services, and more. Residents are required to pay a fee for these services as determined by the Department of Health. Please ask our Facility Manager for the full details.

DISCLAIMER

All rates are calculated using a government-approved rate of 8.38% as of 1st January 2024. Fees and charges are current for the period 1st January 2024 to 31st March 2024. Accommodation pricing is current at the date of publication and is subject to change at any time. Room dimensions are approximately only and actual size may vary.